



Healthcare Conference 2022

17 - 18 March 2022 | QEII Centre, London

Scan4Safety then and now

Stephen Bush

Medical director – operations, Leeds Teaching Hospitals NHS Trust

[#bettercarecostsless](#)



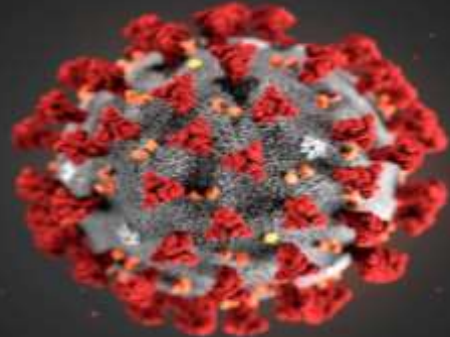
Scan4Safety in Leeds



Why this matters to me as a clinician and how
we continue to innovate with GS1 standards

Mr. Stephen Bush
Medical Director Operations
Leeds Teaching Hospitals







Abdominal Medicine & Surgery

Adult Critical Care

Adult Therapies

Cardio-Respiratory

Chapel Allerton
Hospital

Chapel Allerton

Leeds Children's
Hospital

Leeds Children's Hospital

Emergency &
Specialty Medicine

Head and Neck

Leeds Cancer
Centre

Leeds
Cancer Centre

Leeds Dental
Institute

Leeds
Dental Institute

Pharmacy
Services

Medicines Management
& Pharmacy Services

Leeds Centre for
Neurosciences

Centre for
Neurosciences

Leeds Cancer
Centre

Oncology CSU

Outpatients

Leeds
Pathology

Pathology

Leeds
Radiology

Radiology

Theatres
and Anaesthesia

Theatres
and Anaesthesia

Trauma and
related services

Women's Services

- Home**
- Actions**
- Patient Lists**
- Browse List >
- Create Patient List
- Custom Patient List >
- eDAN >
- Ward (Old View) >
- Unplanned Patient List >
- Bed State >
- Contacts**
- Browse Contacts >
- Manage Contacts >
- Reports**
- External Systems**
- BMJ Best Practice**
- UpToDate**
- Leeds Health Pathways**
- More**

My Notifications

Coming Soon.

My Recent Patients

My Recent Lists

- Ward - 26 (LGI)
- Name 26 (LGI) Code L26
- Ward - 29 (SJUH)
- Name 29 (SJUH) Code J29
- Ward - 28 (LGI)
- Name 28 (LGI) Code L28
- Ward - 32 (SJUH)
- Name 32 (SJUH) Code J32
- Ward - L28P (LGI)
- Name L28P (LGI) Code L28P
- Currently Admitted - Copy of outliers 1
- Admissions Custom Patient List - Last Viewed 25-Oct-2021

My Recent Reports

- COVID-19_Inpatients_COVIDCategories
- Last Viewed 15-Mar-2022 07:21
- COVID-19_PositiveTests_CurrentInpatients
- Last Viewed 22-Feb-2022 16:36
- Covid-19 Dashboard
- Last Viewed 24-Dec-2021 09:55
- Inpatient Outliers
- Last Viewed 22-Oct-2021 07:53
- COVID-19_Hospital_Onset_Days
- Last Viewed 25-Aug-2021 08:57
- COVID-19 Patient Outcomes (v2)
- Last Viewed 23-Jul-2021 08:21

Twitter Feed

#LeedsDigitalWay
CONNECTS - TRANSFORMS - IMPROVES

DITLeeds @DITLeeds - 7 days
This International Women's Day, our CCIO @jackie_whittle explains the importance of diverse, inclusive leadership...
<https://t.co/8Sml9Xsq>

DITLeeds @DITLeeds - 8 days

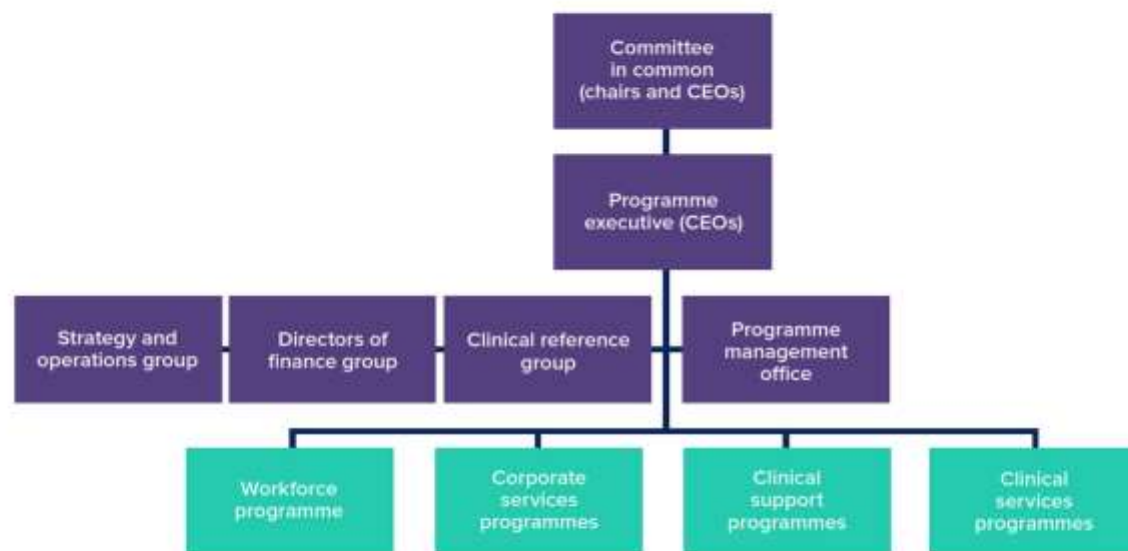
Did you know?

COVID Alert duration
is being reduced to

28 days

Click Here for
more information

West Yorkshire Association of Acute Trusts - Governance



Non-governance functional groups:





Work Stream	Goal
Live Bed State	Creating a process and dataflow that will support the establishment of an Operations Centre
Real Time Location Tracking	A stand alone system that will allow all hospital staff to identify the location of people, equipment and resources
Supply X	A comprehensive inventory management system that will integrate data feeds into clinical systems







Trust Position

Beds Available
Side Rooms
#Male # Female
Planned Discharges <12hours (Definite or ?)
Planned Discharges <24 hours (Definite or ?)

AMS

Beds Available
Side Rooms
#Male # Female
Planned Discharges <12hours (Definite or ?)
Planned Discharges <24 hours (Definite or ?)

Adult Critical Care

Beds Available
Side Rooms
#Male # Female
Planned Discharges <12hours (Definite or ?)
Planned Discharges <24 hours (Definite or ?)

Cardio-Respiratory

Beds Available
Side Rooms
#Male # Female
Planned Discharges <12hours (Definite or ?)
Planned Discharges <24 hours (Definite or ?)

Chapel Allerton

Beds Available
Side Rooms
#Male # Female
Planned Discharges <12hours (Definite or ?)
Planned Discharges <24 hours (Definite or ?)

Leeds Children's Hospital

Beds Available
Side Rooms
#Male # Female
Planned Discharges <12hours (Definite or ?)
Planned Discharges <24 hours (Definite or ?)

Speciality and Integrated Medicine

Beds Available
Side Rooms
#Male # Female
Planned Discharges <12hours (Definite or ?)
Planned Discharges <24 hours (Definite or ?)

Head and Neck

Beds Available
Side Rooms
#Male # Female
Planned Discharges <12hours (Definite or ?)
Planned Discharges <24 hours (Definite or ?)

Leeds Cancer Centre

Beds Available
Side Rooms
#Male # Female
Planned Discharges <12hours (Definite or ?)
Planned Discharges <24 hours (Definite or ?)

Centre for Neurosciences

Beds Available
Side Rooms
#Male # Female
Planned Discharges <12hours (Definite or ?)
Planned Discharges <24 hours (Definite or ?)

Oncology CSU

Beds Available
Side Rooms
#Male # Female
Planned Discharges <12hours (Definite or ?)
Planned Discharges <24 hours (Definite or ?)

Trauma Related Services

Beds Available
Side Rooms
#Male # Female
Planned Discharges <12hours (Definite or ?)
Planned Discharges <24 hours (Definite or ?)

Women's Services

Beds Available
Side Rooms
#Male # Female
Planned Discharges <12hours (Definite or ?)
Planned Discharges <24 hours (Definite or ?)

Urgent Care

Overall number of patients in department
Assessment times
Vet # clerking
TCI time # Transport
Bed acknowledgement time # Discharge

Assessment Units

Overall number of patients in department
Assessment times
Vet # clerking
TCI time # Transport
Bed acknowledgement time # Discharge

Non-elective/ Unplanned

A&E TCI LGI
A&E TCI SJUH
A&E TCI Paeds
TCI Assessment Unit

Elective Admissions

CARPS/ Transport

Current jobs requested



The Leeds Improvement Method



There are three concepts at the heart of the **Leeds Improvement Method: Value, Waste and Respect for People**. The Leeds Improvement Method is not only about the process, but also about building on our culture - known as the Leeds Way - so we encourage and empower all staff to identify areas where they can make small changes which would improve the services they deliver for patients.

Four work areas, known as value streams, were chosen for initially developing the Leeds Improvement Method and this has now grown continuously across the Trust.

A **value stream** is a programme of work in a service or project area where we are working with staff to use lean improvement techniques to find solutions for challenges we face.



Methodology

Our methods of Quality Improvement use the Leeds Improvement Method and the Model for Improvement.

The Leeds Improvement Method uses Lean methodology which has strong and well-defined approaches that can help to identify system-level issues for improvement. The Model for Improvement often uses similar tools

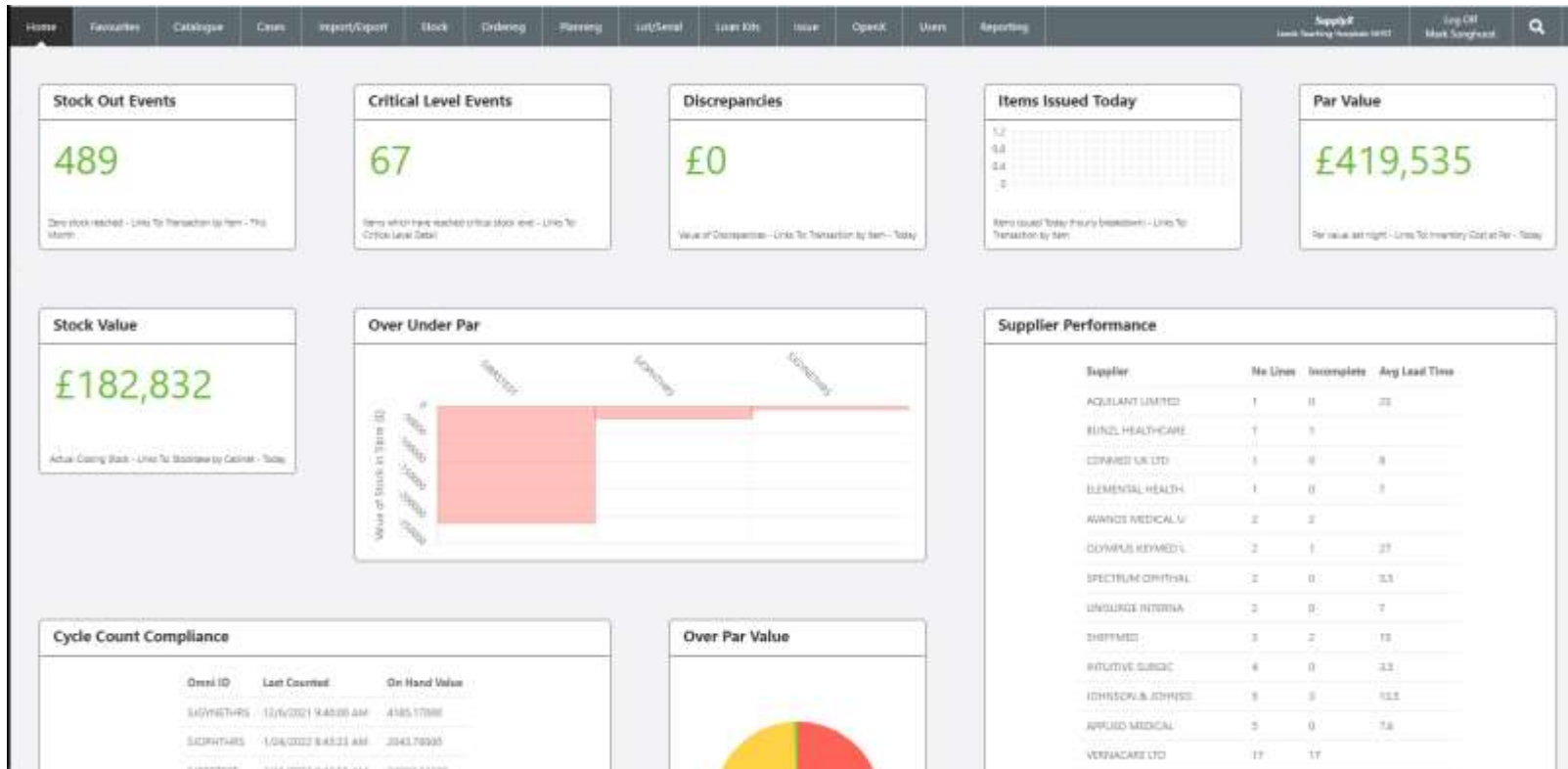
as those used in Lean to understand the local system. Both approaches concentrate on the patients as the focus of the outcomes to be improved.

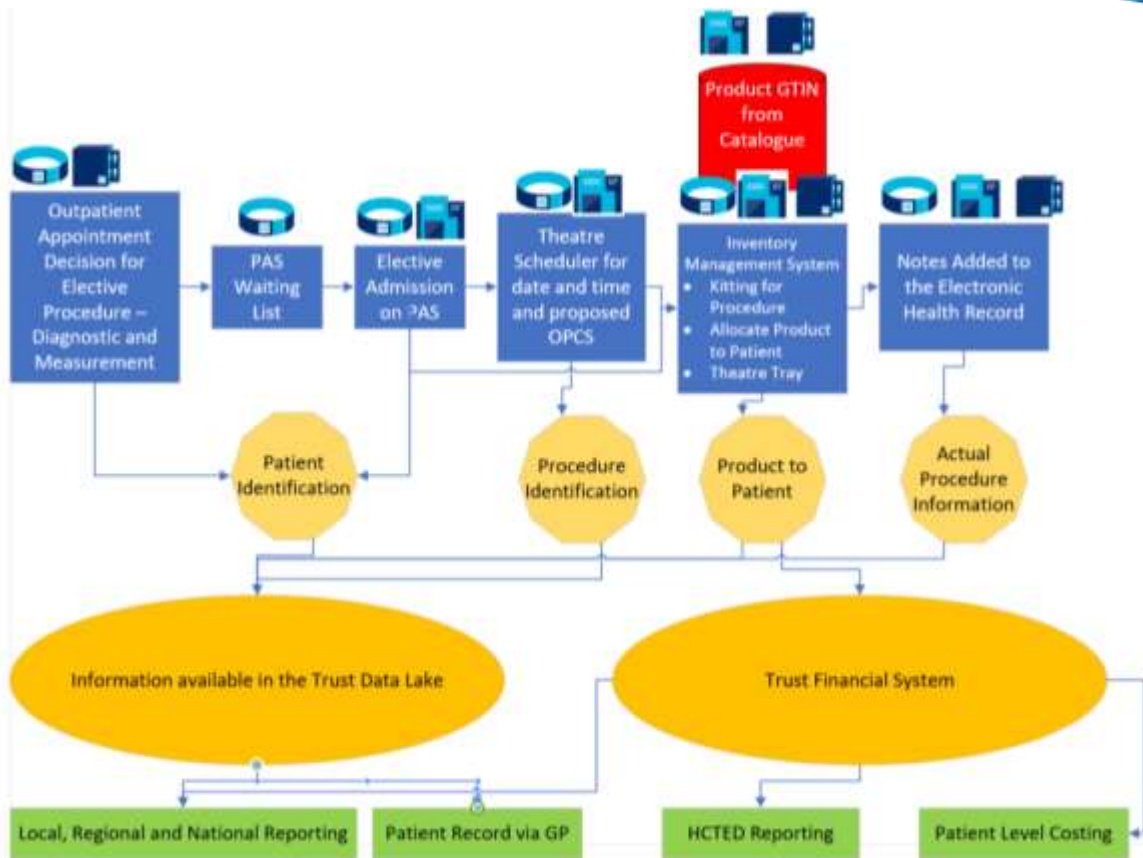
They also recognise that improvement works best when people are at the point of care, those engaged directly in the work are empowered to test changes and use local feedback data to make improvements.



Each value stream includes a number of **Rapid Process Improvement Workshops (RPIW)** within it, looking









COCAINE TOOTHACHE DROPS

Instantaneous Cure!

PRICE 15 CENTS.

Prepared by the

LLOYD MANUFACTURING CO.

219 HUDSON AVE., ALBANY, N. Y.

For sale by all Druggists.

TEAMWORK

**means
never having
to take all
the blame**





