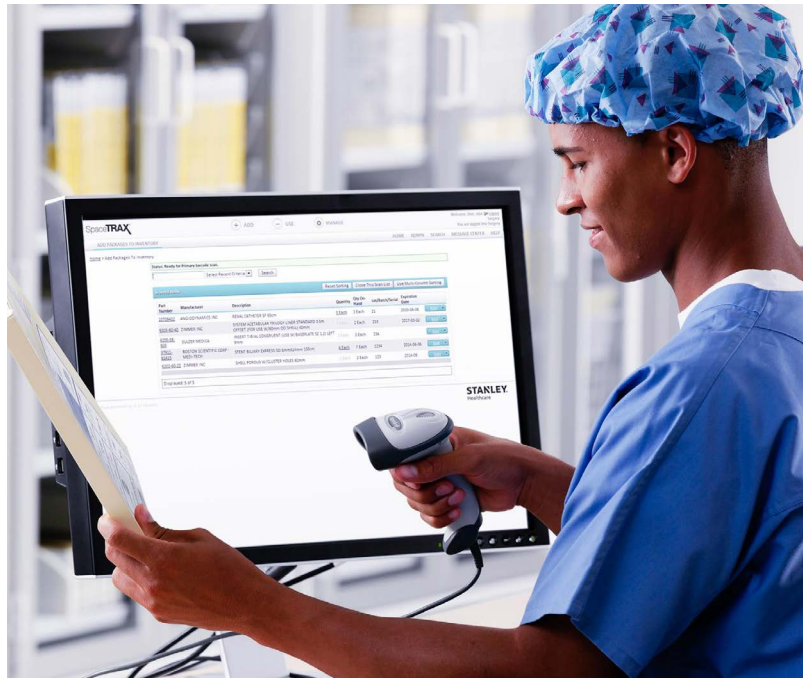


SOLUTION OVERVIEW

# SpaceTRAX™ & Scan4Safety Compliance

Reduce costs, optimise inventory, improve patient care, and align with the Trust-wide initiative of Scan4Safety, utilising GS1 compliant SpaceTRAX



## SpaceTRAX®

### Solution Benefits

- Promotes clinical efficiency.** SpaceTRAX makes life easy for clinical users at the point of use and for staff managing departmental inventory—automatically capturing key information for case management, including supplies, patient, staff and clinical attributes.
- Robust, accurate database.** SpaceTRAX’s global item database is continually updated in a consistent nomenclature by clinical experts.
- Flexible reporting.** Roll-up reporting for multiple departments in multiple hospitals. No other system provides the instant department and facility roll-up.
- No capital costs.** The solution is an entirely web-based SaaS application that requires no capital investment and minimal IT involvement. You can be up and running with the system over a long weekend with our streamlined implementation process. SpaceTRAX works with all existing storage units; no need to replace carts, cabinets, and existing storage unless there is a need.

## SCAN+SAFETY

**Scan4Safety** is a pioneering initiative led by the Department of Health and Social Care (DHSC) that is enabling the delivery of better patient care, improved clinical productivity and supply chain efficiency in NHS Trusts. To accomplish this new program, all NHS trusts in England must adopt a GS1 standard identifier for patients, consumable items, and medical devices. The key to implementing the Scan4Safety program is the adoption of barcode technology, based on GS1 standard formats.

### Challenges

Implementing the Scan4Safety GS1 identifiers using barcode technology allows the association of medications, consumable supplies, and medical devices to a patient. While this direct association allows tracing of all materials used in an episode of care, it does not necessarily allow an easy method of managing consumable inventory. Without the right system, management of supplies continues to be a challenge:

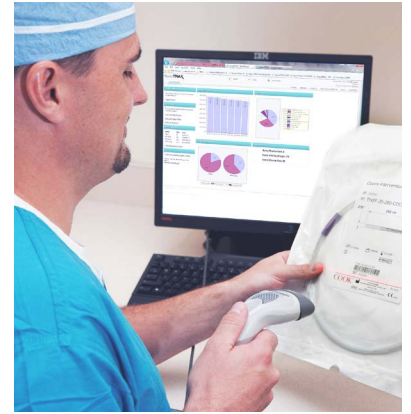
- Inefficient manual process that hinders real-time visibility into supplies and how they’re being utilised without the right system.
- Overstocking of items leads to items expiring on the shelf is common.
- Unnecessary carrying costs associated with “just-in-case” purchases and zero-use items.
- Regulatory compliance as it relates to chain of custody and manufacturer recalls

## Solution

SpaceTRAX is a real-time point-of-use inventory management solution that provides visibility into what's expiring and when, what needs to be re-ordered and when, and utilisation by physician, patient and procedure. SpaceTRAX utilises the same GS1 barcodes to scan items into inventory and track items used in a patient procedure making it fully Scan4Safety compliant.

## How it Works

SpaceTRAX keeps track of lot, batch, serial number and expiration for every item in a GS1 compatible format. Simply scan the barcode and SpaceTRAX captures all the relevant information. Automating the supply chain process puts an end to manually keying items to be ordered. Automatic alerts flag when items are approaching expiration and if an expired or recalled product is scanned for use in a procedure.



## Why SpaceTRAX?

- 1. No capital costs.**
- 2. Rapid deployment.**
- 3. Integration:** Use SpaceTRAX anywhere you have an Internet connection. Standard interfaces are included for billing, purchasing, and patient information.
- 4. Increase ROI:** Optimise inventory levels. Eliminate guesstimating and oversupplying, and losses due to expired products. Increase charge capture.

## SpaceTRAX customers see returns within the first 6 months



**REDUCTION**  
OF ON-HAND  
INVENTORY



**REDUCTION**  
OF LABOR COST TO  
MANAGE INVENTORY



**REDUCTION**  
IN EXPIRED  
ITEM COST



**INCREASE**  
IN VENDOR  
DISCOUNTS



### About STANLEY Healthcare

Over 15,000 hospitals and senior living communities rely on STANLEY Healthcare solutions to empower caregivers to deliver better care. STANLEY Healthcare is a part of Stanley Black & Decker and a proud supporter of the Alzheimer's Association®. Learn more at [stanleyhealthcare.com/en-gb](https://stanleyhealthcare.com/en-gb).